

國立臺灣師大附中

1532 語文資優班

109-1 專題研究手冊



組別：國文組

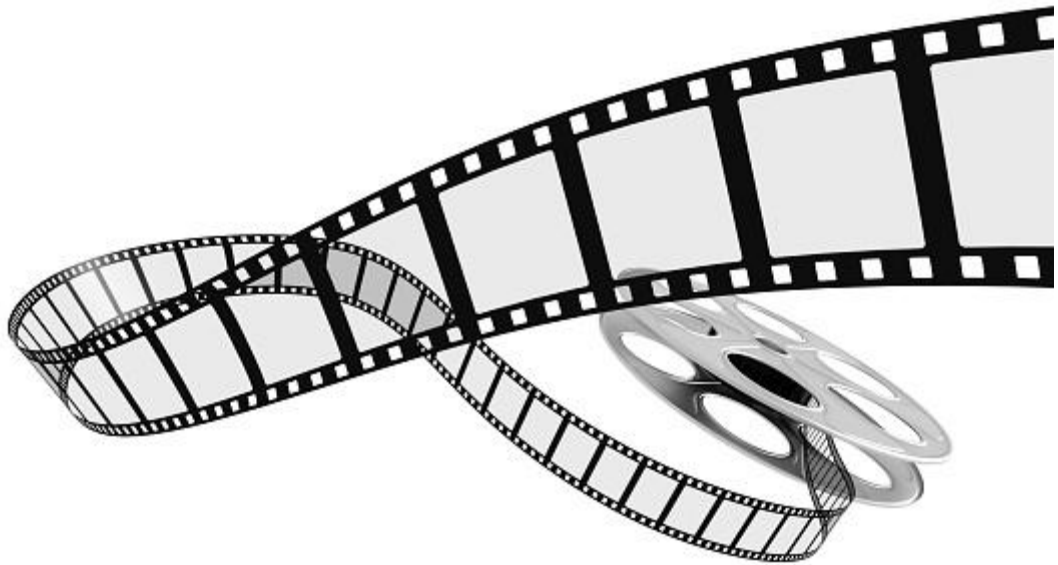
教師：朱美卿老師

座號：25

姓名：陳邵頤

2021/1/27

我的藝術電影學習史



https://drive.google.com/file/d/1ynKgM80bvCqPs1JN2o6Y4zaSyboH_3Gb/view

(p.s.因檔案過大空間不夠，改以連結方式呈現)

國立臺灣師大附中

1532 語文資優班

109-1 專題研究手冊



組別：英文組

教師：黃翎華老師

座號：25

姓名：陳邵頤

2020/12/15

Theseus(鐵修斯)



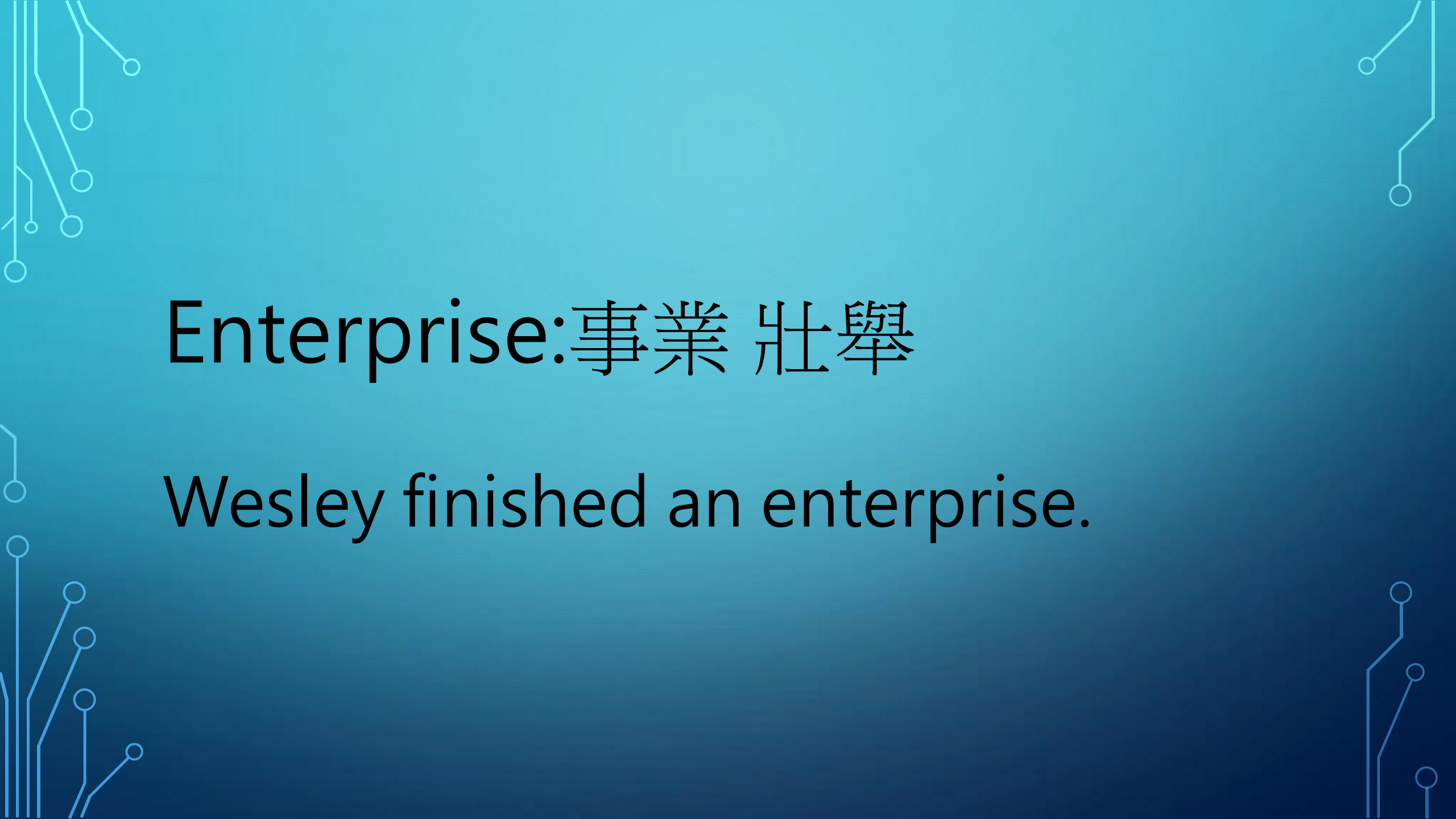


THESEUS

組員：23. 周鈺元25. 陳邵頤27. 趙謐友29. 賴亮宇

Vocabulary



The background is a blue gradient. In the corners, there are white line-art illustrations of circuit boards or neural networks, with lines connecting to small circles.

Enterprise:事業 壯舉

Wesley finished an enterprise.



Magnificent:高尚的

Wesley has a magnificent
heart.



The background is a blue gradient. In the corners, there are white line-art illustrations of circuit boards or neural networks, with lines and small circles representing nodes.

Determination:決心

Wesley has a strong determination.



Contemptible:可鄙的

Kevin has a contemptible heart.



The background is a blue gradient. In the corners, there are white line art illustrations of circuit boards or neural networks, with lines connecting to small circles.

Confinement:禁閉

Kevin is in a confinement.



Inhabitant:居民

Wesley and Kevin are inhabitants in Taiwan.



The background is a blue gradient. In the corners, there are white line-art illustrations of circuit boards or neural networks, with lines connecting to small circles.

Commonwealth:聯邦

Wesley created a commonwealth.

Character



Aegeus



Theseus' father



Athenian King



Theseus



The great Athenian hero



Kill Minotaur



Resigned his royal power
and organized a
commonwealth



**What each had done to others ,
Theseus did to him.**

Minotaur



Half-bull, half-human



Lived in the labyrinth



Was killed by Theseus



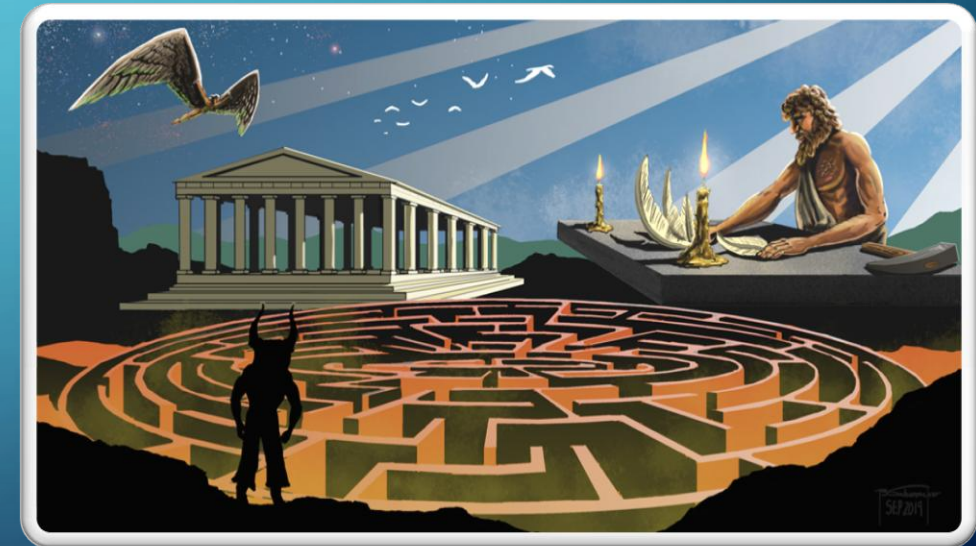
Daedalus



A great architect and inventor



Built the labyrinth



Ariadne



The princess of Crete



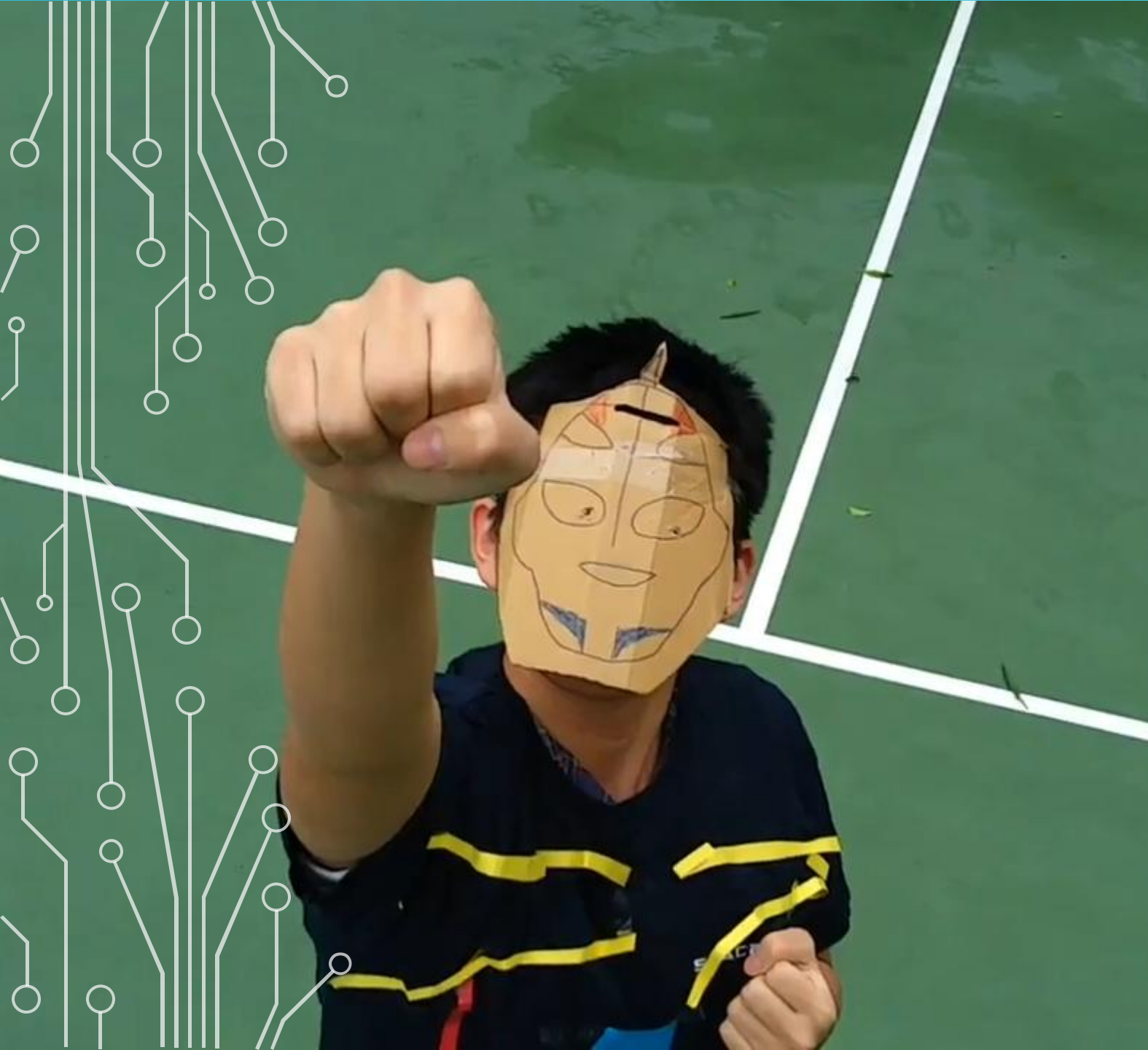
Fell in love with Theseus



Helped Theseus escape
from the labyrinth







THE BIRTH OF THE HERO- THESEUS



RISE OF THESEUS



BEATING MINOTAUR



BECOMING
THE KING

HAVING A SON



ME REALIZING STORY WONT HAVE



HOT SHOWERS

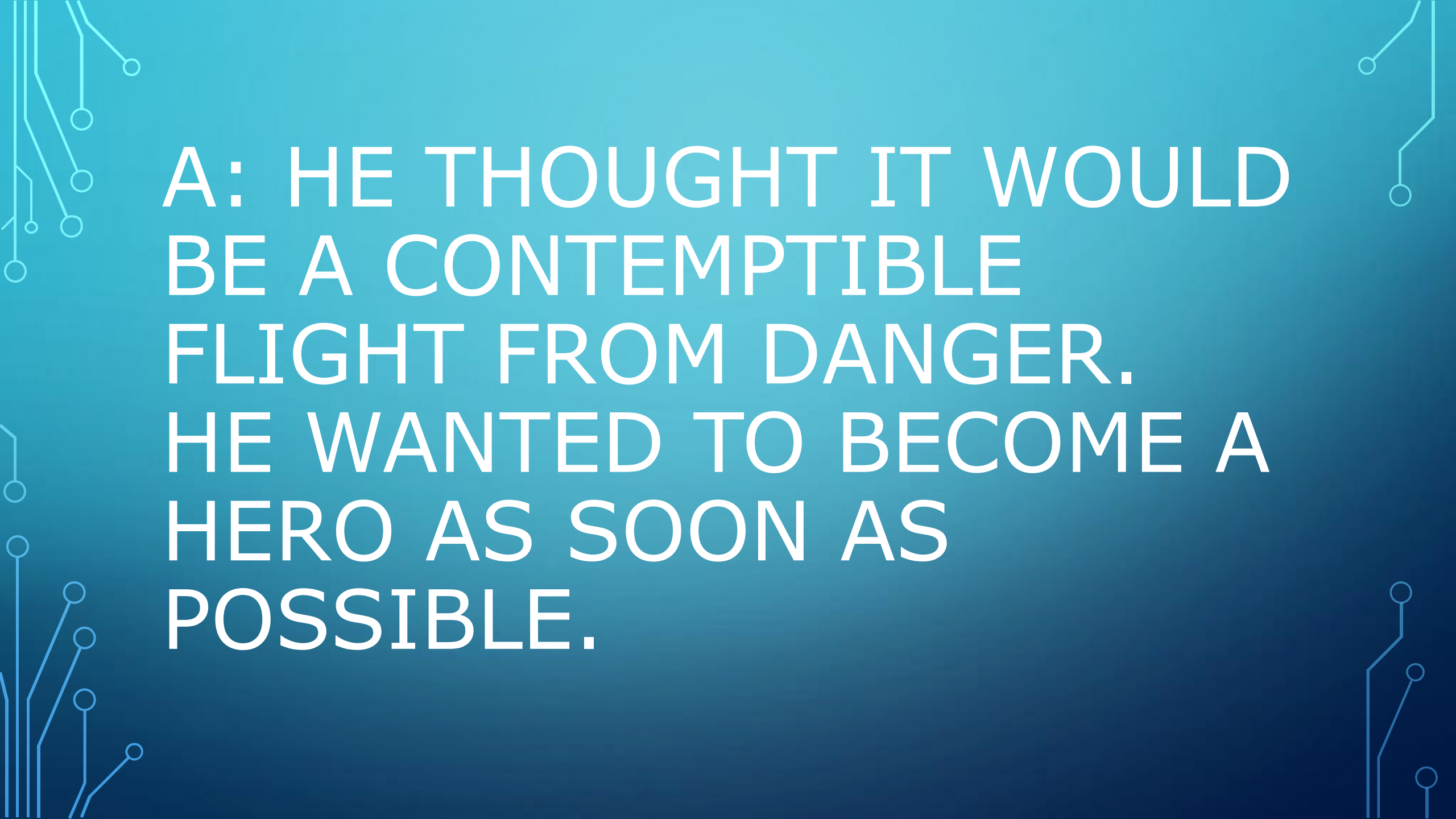
DEATH OF
THESEUS

Q&A



The background is a blue gradient. In the corners, there are decorative white line art elements resembling circuit boards or neural networks, with lines and small circles.

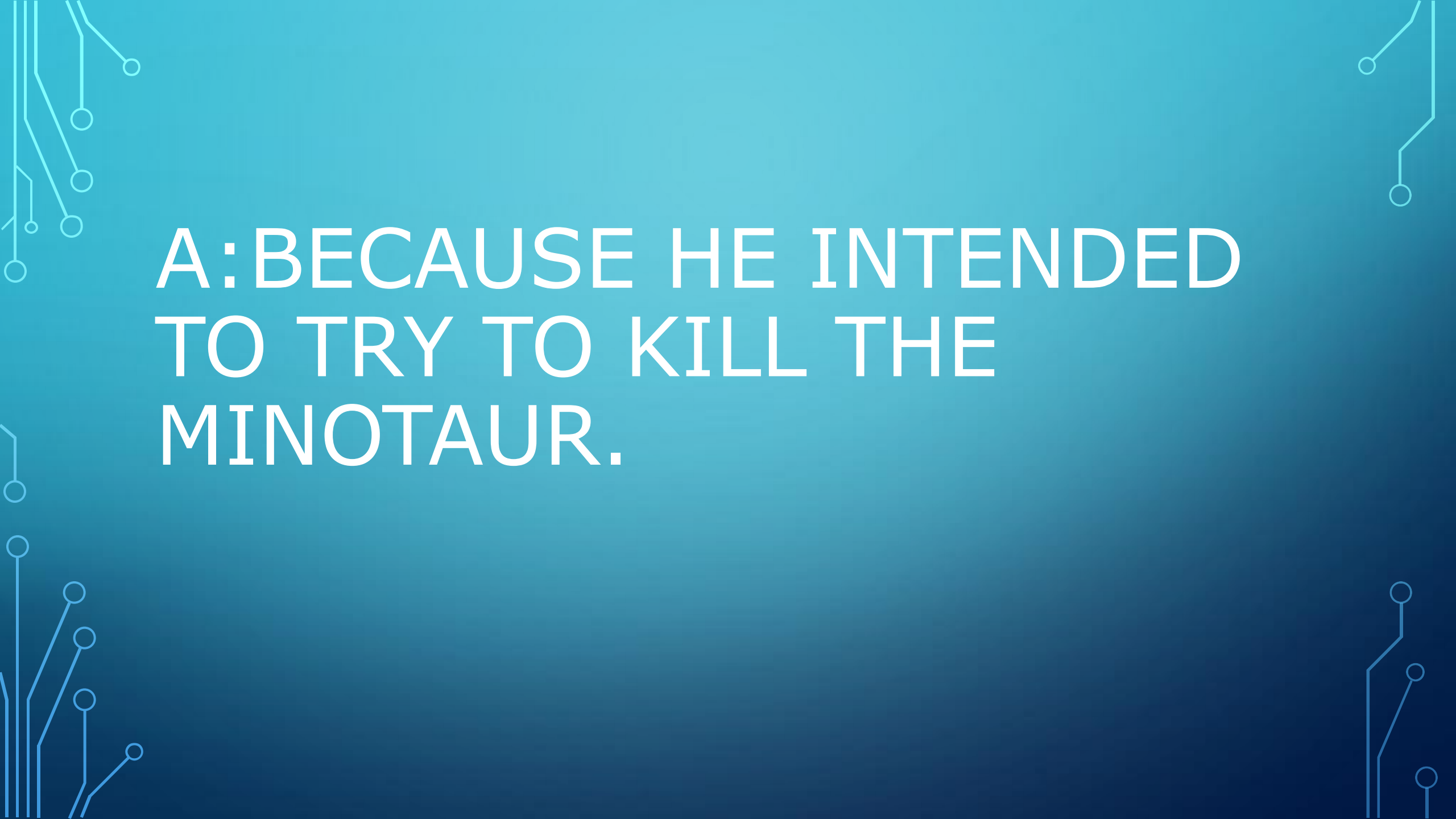
1.WHY DIDN`T THESEUS
ARRIVE AT THE
DESTINATION BY SAILING ?

The background is a blue gradient. In the corners, there are decorative white line art elements resembling circuit boards or neural networks, with lines and small circles connecting them.

A: HE THOUGHT IT WOULD
BE A CONTEMPTIBLE
FLIGHT FROM DANGER.
HE WANTED TO BECOME A
HERO AS SOON AS
POSSIBLE.

The background is a blue gradient. In the corners, there are decorative white line art elements resembling circuit boards or neural networks, with lines and small circles.

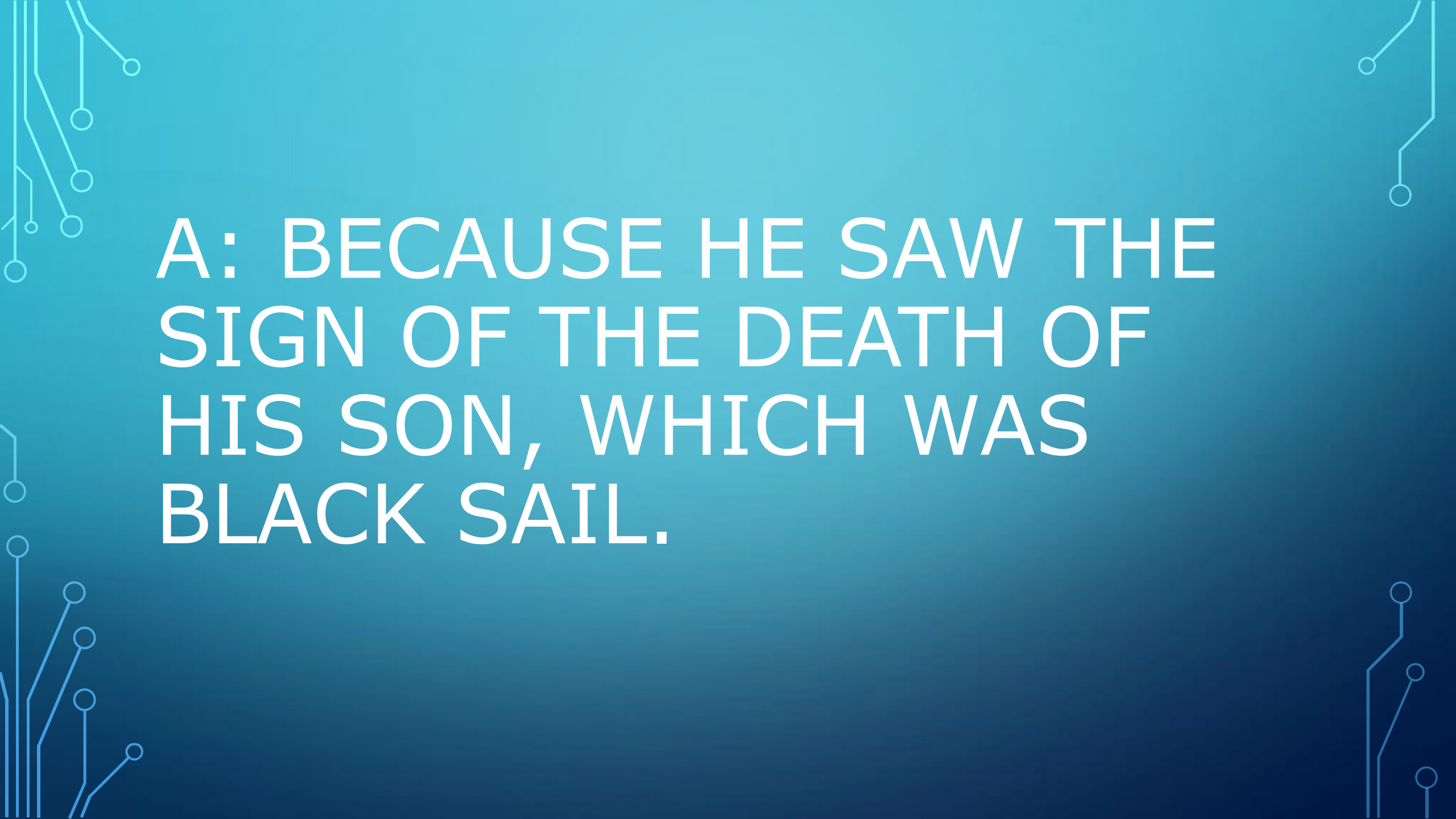
2.WHY DID THESEUS COME
FORWARD AND OFFER TO
BE ONE OF THE VICTIMS ?

The background is a blue gradient. In the corners, there are decorative white line art elements resembling circuit boards or neural networks, with lines and small circles.

A: BECAUSE HE INTENDED
TO TRY TO KILL THE
MINOTAUR.

The background is a blue gradient. In the corners, there are white line-art illustrations of circuit boards or neural networks, with lines and small circles representing nodes.

3.WHY DID THESEUS`S DAD DIE IN THE END ?

The background is a blue gradient. In the corners, there are decorative white line art elements resembling circuit boards or neural networks, with lines and small circles.

A: BECAUSE HE SAW THE
SIGN OF THE DEATH OF
HIS SON, WHICH WAS
BLACK SAIL.

The image features a blue gradient background with white circuit-like lines in the corners. These lines consist of straight segments and small circles, resembling a stylized electronic circuit or data flow diagram. They are positioned in the top-left, top-right, bottom-left, and bottom-right corners, framing the central text.

THE END